



# Introduction to At-Large Community

Representing the Interests of Internet End Users in ICANN activities

**ICANN**  
ANNUAL GENERAL

**60**

**ABU DHABI**  
28 October–3 November 2017



# About ICANN At-Large Community



**1**

About the  
At-Large  
Community

**2**

Key Activities done  
by the At-Large  
Community

**3**

How to engage with  
the At-Large  
Community



# About the At-Large Community



# Who is the At-Large Community?



Volunteer Community, with over 200 organisations and individual members around the world that represents the interests of individual Internet users in ICANN activities

# Who is the At-Large Community?

Any group that supports individuals' ability to share their views on ICANN issues can be a part of the At-Large Community. These include

- Professional societies (e.g. engineers, attorneys, etc.)
- Academic and research organizations
- Community networking groups
- Consumer advocacy groups
- Internet Society chapters
- Computer user organizations
- Internet civil society groups

Groups that become accredited by ICANN are called **At-Large Structures** (ALSes).

If you belong to such a group, you can encourage the group to [apply online to join the At-Large Community](#).

Individuals can become members of the At-Large community by:

- Becoming a member of an At-Large structure (ALS)
- Joining directly as an individual member.

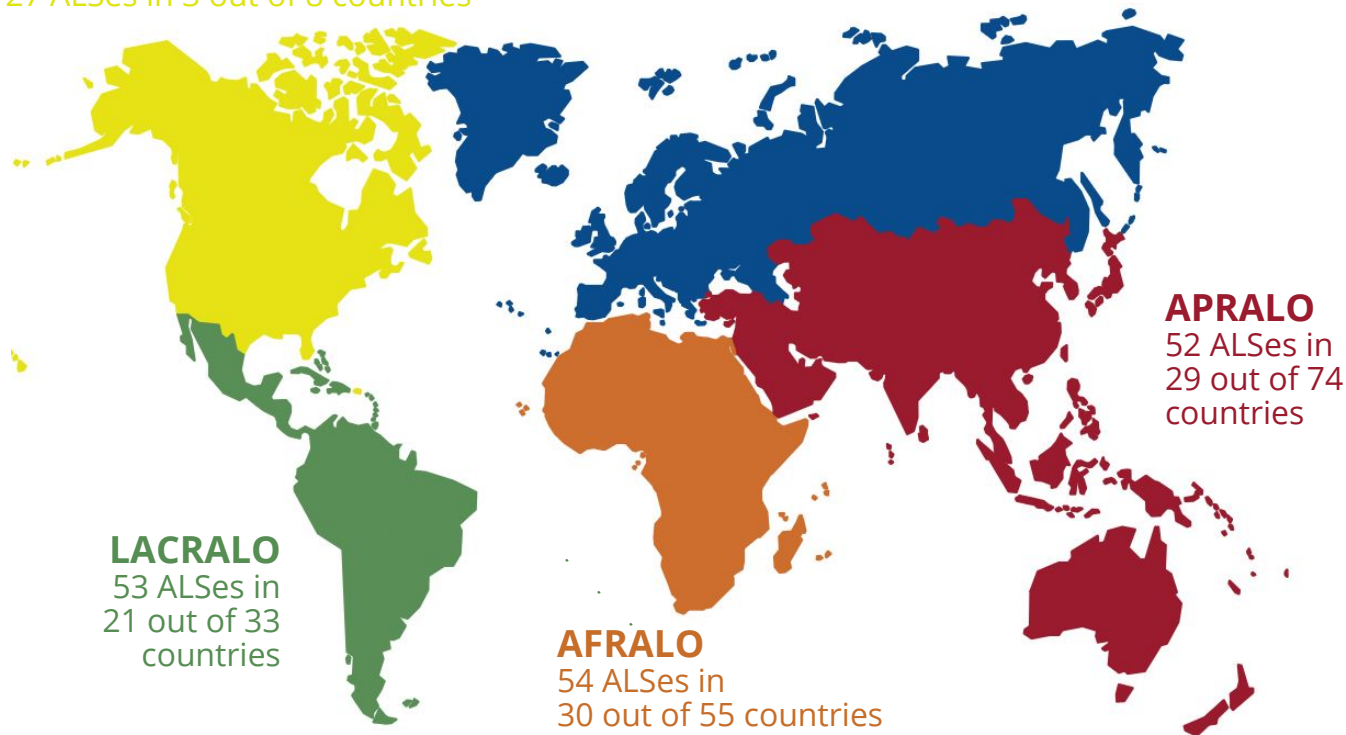


# At-Large Community Organisational Structure

## NARALO

27 ALSes in 3 out of 8 countries

**EURALO** - 37 ALSes in 17 out of 78 countries



The At-Large Community of ALSes and individual members are organized into five **Regional At-Large Organisations** (RALOs) based on their geographic regions

Africa (**AF**)  
Asia Pacific (**AP**),  
Europe (**EU**),  
Latin America & Caribbean (**LAC**)  
North America (**NA**)

## At-Large Advisory Committee (ALAC) - 15 Members



**10** selected by RALOs to serve on the ALAC  
(2 from each RALO)



**5** selected by Nom Com to serve on the ALAC  
(1 from each region)






Seat #15 on the ICANN Board is selected by the ALAC and the At-Large Community

# Key activities done by the At-Large Community

# Key At-Large Community activities

The At-Large Community has the duty to understand, defend, and advocate for the interests of global Internet end users in ICANN activities.

To fulfill this duty, we focus on three areas of work:

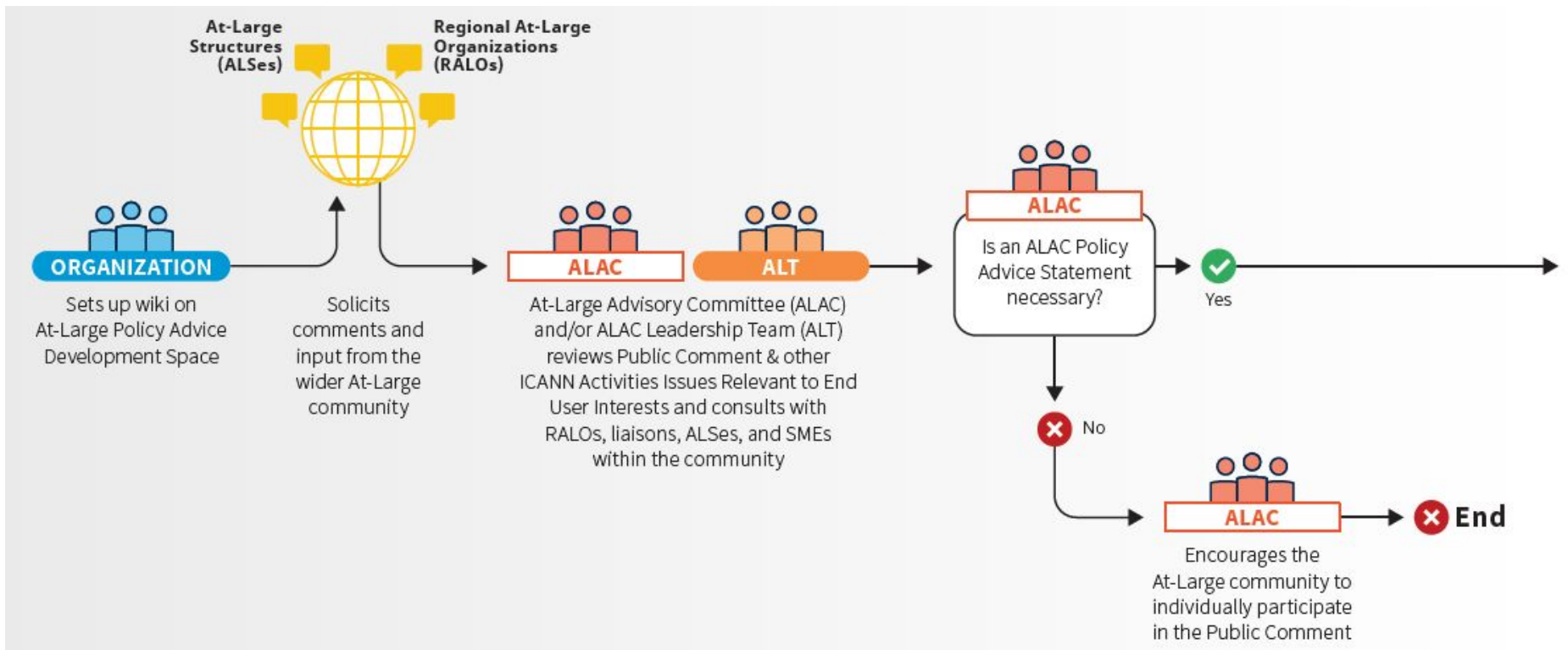
-  Comments on ICANN activities
-  Policy Development
-  Organisation Building



Policy Advice Development - The At-Large Advisory Committee (ALAC) publicizes, analyzes, and advises on proposed ICANN policies and decisions that reflect the views and needs of individual users at regional and global levels via ICANN's [Public Comments](#), which allows the community to comment on proposals initiated from ICANN staff or Working Groups.

At-Large Community members can draft position statements on behalf of the ALAC, comment on draft statements, and engage in policy-focused activities. See <https://atlarge.icann.org/policy-summary>

# Comments on ICANN activities



## Legend

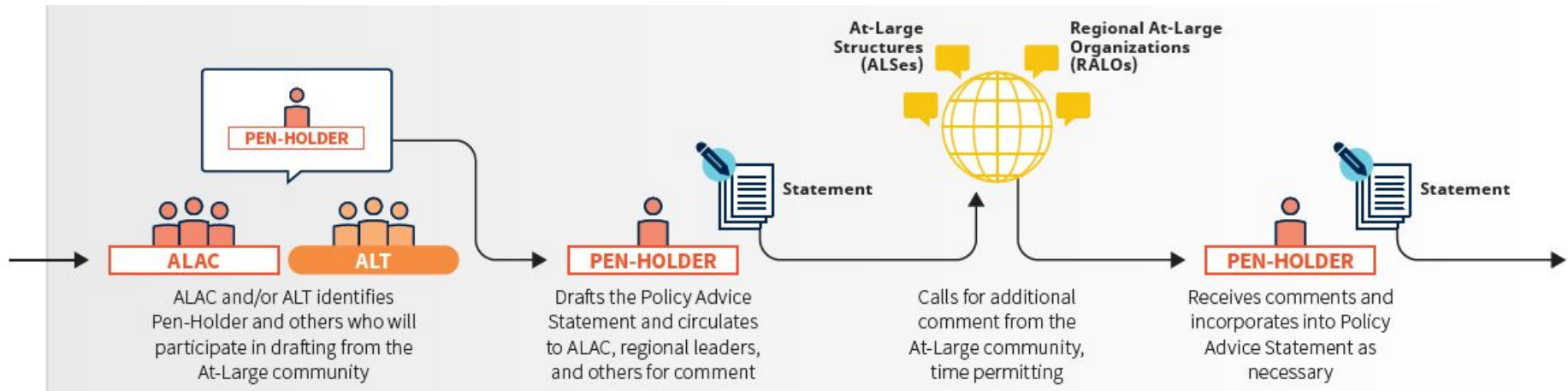


## Glossary

**AC** - Advisory Committee  
**ALS** - At-Large Structure  
**SME** - Subject Matter Expert  
**SO** - Supporting Organizations  
**RALO** - Regional At-Large Organization  
**WG** - Working Group



# Comments on ICANN activities



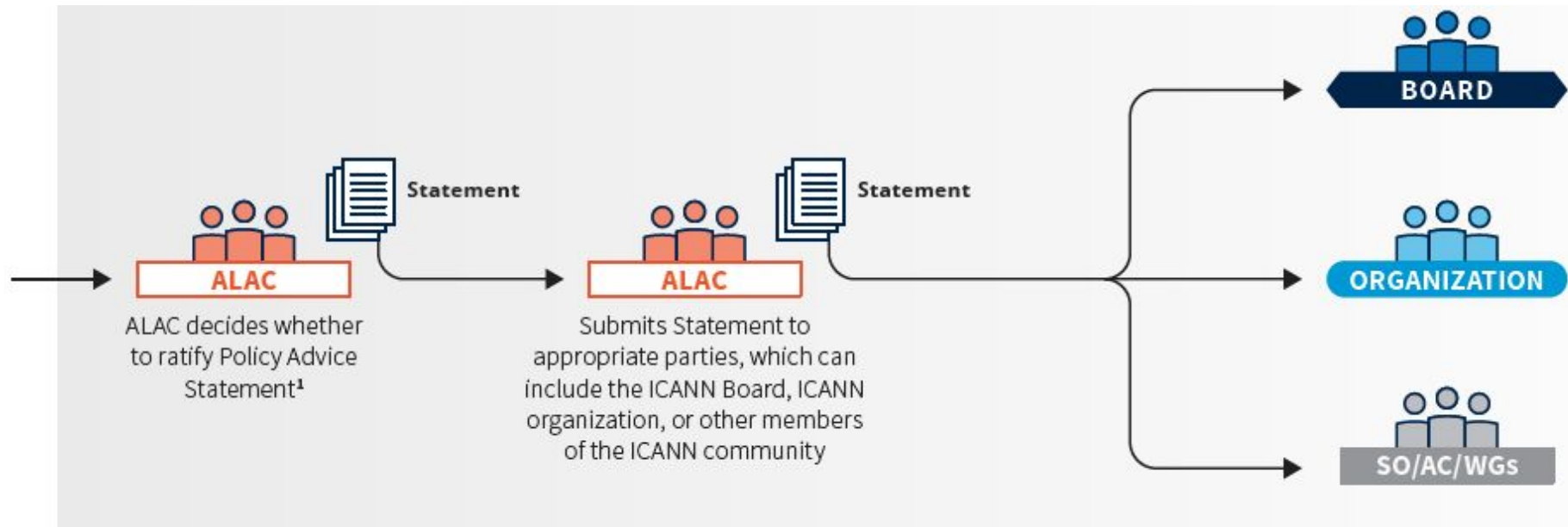
## Legend



## Glossary

**AC** - Advisory Committee  
**ALS** - At-Large Structure  
**SME** - Subject Matter Expert  
**SO** - Supporting Organizations  
**RALO** - Regional At-Large Organization  
**WG** - Working Group

# Comments on ICANN activities



## Legend



## Glossary

**AC** - Advisory Committee  
**ALS** - At-Large Structure  
**SME** - Subject Matter Expert  
**SO** - Supporting Organizations  
**RALO** - Regional At-Large Organization  
**WG** - Working Group



# Recent ALAC comments on ICANN activities

Since 2003, The At-Large Advisory Committee (ALAC) has developed over **300** comments on ICANN policies and issues impacting Internet users. See <https://atlarge.icann.org/policy-summary>

Topic	
Accountability/Transparency	50
Contracted Party Agreements	84
DNS	31
Engagement	75
IANA	15
ICANN Board/Bylaws	51
IDN	41
Intellectual Property	17
Internet Governance	11
Internet Protocols	3
Legal/Regulatory	5
New gTLDs	81
Operations/Finances	48
Policy Processes	59
Public Interest	18
Reviews/Improvements	60
Security/Stability	36
WHOIS	42

Publish Date	Title	Topic(s)
In Progress	Creating a Consumer Agenda at ICANN	Public Interest
2 Oct 2017	Proposed Dates for ICANN Public Meetings 2021-2023	Engagement, Operations/Finances
8 Sep 2017	At-Large Review Recommendations Feasibility Assessment & Implementation Plan	Accountability/Transparency, Engagement, ICANN Board/Bylaws, Operations/Finances, Public Interest, Reviews/Improvements
7 Jul 2017	Revised ICANN Procedure for Handling WHOIS Conflicts with Privacy Law: Process and Next Steps	Contracted Party Agreements, Reviews/Improvements, WHOIS
14 Jun 2017	Draft Framework of Interpretation for Human Rights	Accountability/Transparency, ICANN Board/Bylaws, Public Interest
30 May 2017	Proposed Renewal of .NET Registry Agreement	Contracted Party Agreements

# Policy Development

At-Large members can participate in various [GNSO Working Groups](#), Cross Community Working Groups (CCWGs) and Review Teams to develop ICANN policies and/or recommendations.

Some recent examples:

- [Competition, Consumer Trust and Consumer Choice Review Team](#)
- [Customer Standing Committee](#) (CSC)
- [CCWG Accountability Work Stream 2](#) and its various subgroups
- [CCWG Auction Proceeds](#)
- [Registration Directory Service \(RDS-WHOIS2\) Review Team](#)

The ALAC also has liaisons to other ICANN Communities:

- [Security & Stability Advisory Committee](#) (SSAC)
- [Governmental Advisory Committee](#) (GAC)
- [Generic Names Supporting Organisation](#) (GNSO)
- [Country Code Names Supporting Organisation](#) (ccNSO)



At-Large plays an important role in making sure that individual Internet users keep in touch with ICANN's main activities, contribute to policy development, and provide sustainable flow of new blood into the multistakeholder model.

To achieve this goal, At-Large carries out activities, events, and meetings that focus on outreach and engagement, capacity building, and operational needs via Working Groups.

Almost all of our working groups are open to everyone regardless of whether you are a member of At-Large or an observer.

A full listing of At-Large Working Groups can be found at <https://atlarge.icann.org/>

# At-Large Community Working Groups

There are several At-Large Community Working Groups that can match your interest, whether you are a member of the At-Large Community or an observer.

For those in, or involved with:

## **Policy, Law and/or Internet Governance Interests**

[ICANN Evolution](#) ; [IDN Policy](#) ; [New gTLDs](#) ; [Registration Issues](#) ; [Public Interest](#)

## **Technical Interests**

[Technical Issues](#) ; [Accessibility](#) ; [Technology](#)

## **Civil Society**

[Capacity Building](#) ; [Outreach & Engagement](#) ; [Social Media](#) ; [Captioning Project](#)

## **Academia**

[Capacity Building](#) ; [Accessibility](#)

# How to engage with the At-Large Community



# But first.....Why engage with At-Large?



The At-Large Community represents the interests of Internet end users in ICANN activities. ICANN activities include policies that

- govern how generic Top Level Domains (gTLDs) are made available worldwide,
- govern how people can register and use domain names
- ensure local languages are available as domain names,
- govern your country code Top Level Domain (ccTLD)

Being a part of the At-Large Community brings you into contact with a network of diverse, global community that share similar Internet Governance interests.

Also, being in the “room” where these policies are being formulated and discussed, you can make your voice heard and help shape these policies being developed by ICANN's multistakeholder community that affect current and future Internet users.

To see a summary of several ICANN policy issues and why end users should care about these issues, see <http://goo.gl/BCvxuZ> or a PDF at <http://bitly.com/why-end-users-should-care> .

Given that most At-Large activities (Policy Advice Development, Policy development and Organisation building) are done online, the key first step to delving into the world of At Large is being able to receive notifications of when At Large activities are taking place.

At-Large activities are promoted and announced via



- At-Large Social media channels on [Twitter](#) and [Facebook](#)



- At Large Calendar  
<http://bitly.com/AtLargeCalendar>



- At-Large Mailing lists  
<https://atlarge.icann.org/get-involved/mailling-lists>

# How to engage with At-Large



At-Large activities include conference calls which you can attend online. Each conference call has a webpage with an agenda and how you can connect with your computer/mobile device and/or phone. You can request ICANN to call you directly before the call begins. Many At-Large conference calls have interpretation in other languages for persons who don't speak English.



Anyone can attend these calls!



These calls are recorded and after the call, the meeting page is updated with the recordings and transcripts for anyone to review and ask questions from the WG chair or via At-Large Staff at [staff@atlarge.icann.org](mailto:staff@atlarge.icann.org).





- Find and follow an At-Large Working Group that interests you <https://atlarge.icann.org/>



- Find At-Large Community members in your country or region <https://atlarge.icann.org/alses>



- See the At-Large discussion on policy issues <https://atlarge.icann.org/policy-summary>



- If you are in a group that could be interested in being in the At-Large Community, join online at <https://atlarge.icann.org/get-involved/about-als>

# Questions?



<https://atlarge.icann.org>



[staff@atlarge.icann.org](mailto:staff@atlarge.icann.org)



[twitter.com/icannatlarge](https://twitter.com/icannatlarge)



[flickr.com/photos/icannatlarge](https://www.flickr.com/photos/icannatlarge)



[facebook.com/icannatlarge](https://facebook.com/icannatlarge)



[youtube.com/user/icannatlarge](https://youtube.com/user/icannatlarge)