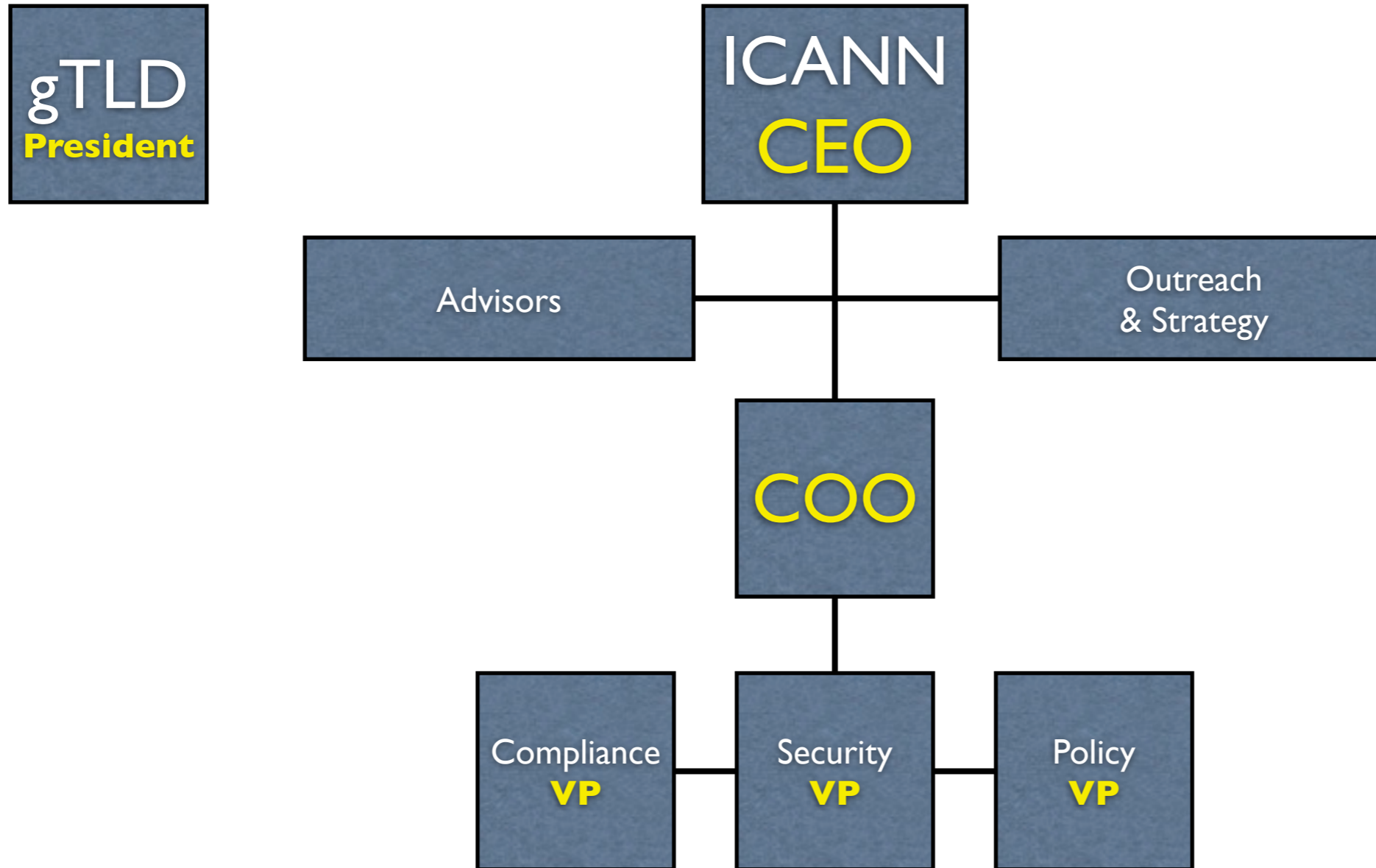


Management Org Chart

<https://www.icann.org/en/about/staff/management-org-09sep13-en.pdf>



Management Org Chart

- Have you also got a similar chart showing how ICANN's **tasks/projects/activities** are assigned to the persons/departments mentioned in the Organization Chart??
- Have you got a chart showing how ICANN's **budget** is distributed between the individual tasks/projects/activities and the departments mentioned in the Organization Chart??

ICANN will **evolve and adapt** to fulfill its limited, but important technical mission: Global technical coordination of the Internet's underlying infrastructure - the DNS - to ensure interoperability

Issues	Functions Policy Development Process	Compliance (inner regulator)	Day to day Operations	Outreach
Public Interest Objectives	Guarantee that public interest considerations will prevail at the beginning and at all relevant milestones of the PDP	Public oversight over the DNS	Legitimacy of not-for profit operations of ICANN (?)	Wider participation in (all?) processes (World Wide?)
Accountability & Transparency (points of intervention)	<ol style="list-style-type: none"> 1. Charter of WG 2. Outcomes 3. Implementation 4. Reconsideration 	<ul style="list-style-type: none"> • RAA compliance • Whois accuracy • SSR in face of gTLD growth • Trademark Clearinghouse 	<ul style="list-style-type: none"> • gTLD program • IANA Contract 	<ul style="list-style-type: none"> • Strategy • Cost/Benefit Analysis • Coordination with other I* members
Resources Required	Independent Support (i.e. separate Budgets!) <ul style="list-style-type: none"> • Board • GAC • GNSO PDP • AoC Reviews 	Clear Compliance Function <ul style="list-style-type: none"> • estimated “at cost” • Budget to be calculated in advance to charges to Registries and Registrars 	Strategic & Operating Plans <ul style="list-style-type: none"> • Finance & Administration • Human Resources • Meetings & Logistics • Clear Business Model 	<ul style="list-style-type: none"> • Outreach Expenses vs. support for GAC vs. outreach of other I*-members • ITU sectoral membership
Governance Model	Board (Governance/Public Participation) Reviews as per 9.1. a,b,c,e	Other Reviews as per AoC <ul style="list-style-type: none"> • WHOIS • SSR • Competition and Consumer Trust 	Board (Finance/Audit) External Audits	9.1 (d) continually assessing the extent to which ICANN's decisions are embraced, supported and accepted by the public and the Internet community
Impacts of better Transparency	large increase in public trust - at limited and foreseeable financial cost	large increase in public trust - limited cost	Unforeseeable financial impact of new vs. old “income” model?	Unforeseeable impact on public trust and on operating “expenses”?